

COLORAGE



DISTRIBUTOR:



1473956



QUICK START GUIDE
BALAYAGE MADE EASY



BEFORE



1.

SELECT A SECTION OF HAIR TO PULL THROUGH THE SLOT IN THE MECHE.



4.

CLOSE THE MECHE. APPLY BLEACH AROUND AND OVER THE TEMPLATE.



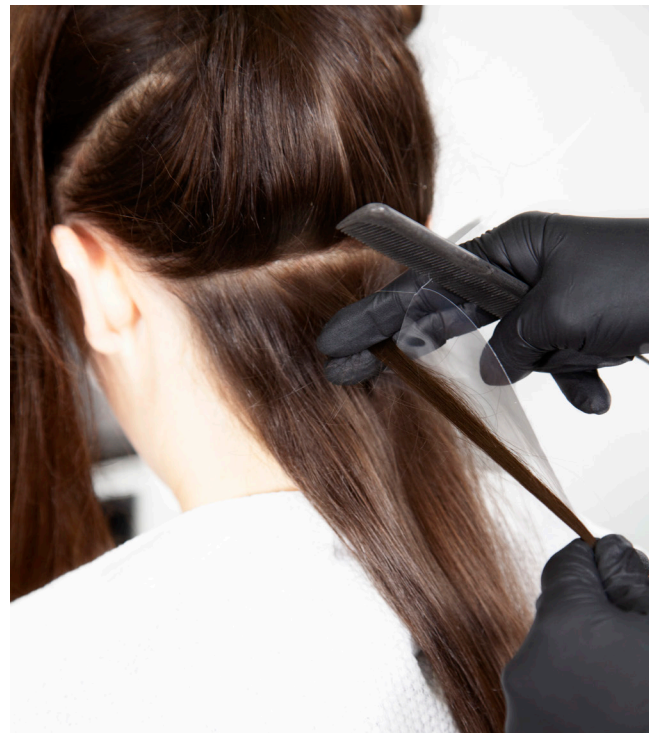
5.

ONCE BLEACH IS APPLIED COVER WITH COLORAGE "B" TOP SHEET/EXTENDER.



2.

OPEN THE MECHE READY TO PULL THE SELECTED HAIR THROUGH THE SLOT.



3.

PULL THE SELECTED HAIR THROUGH THE SLOT WITH THE MECHE AT THE ROOT.



6.

APPLY THE MECHE TO THE WHOLE HEAD TO COMPLETE THE PROCESS.



AFTER



During Covid 19 please be extra vigilant and stay safe. It is known that Bleach kills the Coronavirus; so it is not likely to transfer after use. However, please wash and spray the meches with an anti-bacterial spray before reusing.